

$$\begin{cases} x^2 + 4x = 7 - 5y \\ y^2 + 2x = 9y - 20 \end{cases}$$

$$x^2 + 4x - 7 + 5y + y^2 + 2x - 9y + 20$$

$$(x^2 + 6x + 13 - 4y + y^2)$$

$$x^2 + 6x + 13 - 4y + y^2$$

$$x^2 + 6x + 13 - 4y + y^2$$

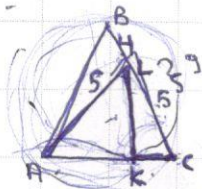
$$x^2 + y^2 - 4x + 13 - 4y$$

$$4 = 6x + 13 - 4y$$

$$6x - 12 - 4y = 0$$

3) $\triangle ABC$
 AL - Success.
 K - middle
 LK -
 BL = 4
 AL = CL = 5
 TIR!
 CK - ?

all: -



$$BL + CL = 4 + 5 = 9$$

$$CK = \triangle LKC$$

$$LK = 5$$

$$LK = ?$$